



March, 2008

PAIDC Board

Terry Vaassen-President

*Vaassen Pluemer
CPA's*

Emmy Probst-VP

Rountree Realty

Jim Schneller--Secretary

Avista, Inc.

Chuck Runde-Treasurer

First National Bank

John Streich

First Capitol Ag

Thomas Geyer

Kopp, McKichan, Geyer

Kathy Kopp

Chamber of Commerce

Eileen Nickels

Platteville City Council

Dan Dreesens

Delta 3 Engineering

Joe Witmer

Mound City Bank

Deb Weigel

Clare Bank

Richard Klawiter

UW-Platteville

Dave Berner

City Of Platteville

EX OFFICIO

Ed White

Platteville City Council

Joe Carroll

City of Platteville

Ron Brisbois

*Grant County Economic
Development Corp.*

EXECUTIVE DIRECTOR

George Krueger

AVISTA Expands Into Platteville Business Incubator

To support its corporate growth, AVISTA Incorporated, a leader in critical-systems software engineering services, is expanding operations in Wisconsin and plans to hire 40 more engineers. After four years of growth, particularly in commercial avionics and government and military programs, the company has outgrown its corporate headquarters in Platteville, Wisconsin. The company already has nearly 150 engineers mostly based in Wisconsin, with additional employees in Iowa and Minnesota.

Construction is underway on the new office space near its headquarters building to support the expanded payroll, including conference meeting space and a new secure software/hardware engineering lab. The new office space is in the Platteville Business Incubator and the company expects to move in during the 2nd quarter.



"With the growth in commercial aviation and military avionics programs around the world, we've maxed out our current facilities," notes James T. Schneller, president of AVISTA Incorporated. "We are planning for continued growth and market leadership as more manufacturers look to outsourcing to improve efficiencies and supplement internal software resources. Critical-systems software and systems development is highly specialized. Companies continue to hire us for our unique offering of U.S. based, full-time engineering staff and program managers."

"I believe one of the biggest mistakes a company can make is to expand facilities too quickly and then realize it is not the right space for them", said Ed White, executive director of the Platteville Business Incubator (PBII).

Locating at PBII will allow AVISTA to grow rapidly without the pressure of the time consuming and expensive process of expanding their current location immediately. AVISTA will be leasing space for at least three years to allow them to adjust to this growth and see where it levels out before constructing a new facility or adding on to their current location.

For more information on the Incubator call Ed White at 608.348.2758.

UW-Platteville Celebrates 100 years of Engineering

PLATTEVILLE - Faculty, staff, alumni and students at the University of Wisconsin-Platteville gathered recently for the kick-off reception that began the year-long celebration of 100 years of engineering.

Chancellor David Markee commented that the three students and 11 full-time faculty who were first employed at the Mining School would be amazed at what the engineering program at UWP has become. According to Markee, there are now around 85 engineering faculty members, and almost 1,800 engineering students.

Rich Shultz, dean of the College of Engineering, Mathematics and Science, spoke after Markee. "What a wonderful opportunity to reflect on where we've come and where we're going, and to say thank you to those who laid the foundation and the philosophy that we still follow today, that students have to build something, to get their hands dirty in order to learn."

The last speaker was Dan Winter, a senior electrical engineering major who will graduate this May. Winter is also a drafter for campus planning and management and the president of the Platteville Paintball Club. Winter spoke of his own experience as a UWP engineering student and his encounters with UWP alumni.

"I have worked at several engineering companies, and the Platteville graduates were easy to pick out. They were the go-to-guys, the cornerstones of the office, the workhorses that everyone depended on because they are skilled and reliable," said Winter.

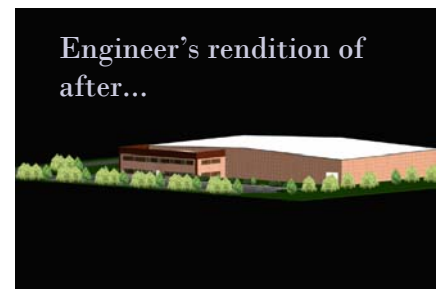
Written by: Megan Mowry, UWP Public Relations

Industrial land for sale—shovel ready lots from 1 to 30 acres. Utilities at curb with excellent telecommunication capabilities. Call (608)348-3050 for details.

Platteville Area Industrial Development Corp.
52 Means Drive, Suite 104
Platteville, WI 53818 (608) 348-3050
Email: plattevilleindustry@centurytel.net
Website: www.plattevilleindustry.com

Shell Building For Sale or Lease

- 24,000 square feet expandable to 48,000 square feet or more
- 3.122 acre lot
- Constructed June, 2002
- 24' at eaves, 28'2" at center
- Priced below replacement value
- Over 7,000 commuters out of Grant County means lots of available labor!
- Brand new 4 lane Highway 151 connects Platteville with Madison in an hour and just minutes to Dubuque



Platteville High School Earned a Bronze Rating and Ranked in the Top 6% of Schools in 40 States According to U.S. News and World Report.

The 2008 U.S. News & World Report America's Best High Schools methodology, developed by School Evaluation Services, a K-12 education data research business run by Standard & Poor's, is based on the key principles that a great high school must serve all its students well, not just those who are bound for college, and that it must be able to produce measurable academic outcomes that show the school is successfully educating its student body across a range of performance indicators.

They analyzed 18,790 public high schools in 40 states using data from the 2005-2006 school year. This is the total number of public high schools in each state that had grade 12 enrollment and sufficient data to analyze for the 2005-2006 school year. A three-step process determined the best high schools. The first two steps ensured that the schools serve all of their students well, using state proficiency standards as the measuring benchmarks. For those schools that made it past the first two steps, a third step assessed the degree to which schools prepared students for college-level work.

Platteville High School scored in the top 6% of the high schools in the analysis.

Check out the article at: http://www.usnews.com/listings/high-schools/wisconsin/platteville_high