

October, 2007

American Customer Care Opens Platteville Operation

PAIDC Board

- Terry Vaassen-President
Vaassen Pluemer CPA's
- Emmy Probst-VP
Rountree Realty
- Jim Schneller--Secretary
Avista, Inc.
- Chuck Runde-Treasurer
First National Bank
- John Streich
First Capitol Ag
- Thomas Geyer
Kopp, McKichan, Geyer
- Kathy Kopp
Chamber of Commerce
- Eileen Nickels
Platteville City Council
- Dan Dreessens
Delta 3 Engineering
- Joe Witmer
Mound City Bank
- Deb Weigel
Clare Bank
- Richard Klawiter
UW-Platteville
- Dave Berner
City Of Platteville
- EX OFFICIO**
- Ed White
Platteville City Council
- Joe Carroll
City of Platteville
- Ron Brisbois
Grant County Economic Development Corp.
- EXECUTIVE DIRECTOR**
- George Krueger

American Customer Care has opened their Platteville operation. The onsite staff along with Chamber of Commerce, city staff and PAIDC celebrated their new facility with a ribbon cutting recently.

They plan on staffing up to 120 employees by the end of the 1st quarter 2008. Currently, the facility is staffing up to about 70 employees. The main client is a pharmacy benefit company.

American Customer Care is based in Bristol, Connecticut and the Platteville facility is a branch of the Dubuque operation. It is housed in the former Blue Cross building between the old Wal-Mart and Avista.



Staci Kress, vice president of strategic resources, cuts the ribbon on American Customer Care's new Platteville facility.

Japan Trip a Success

Ron Brisbois, executive director of Grant County Economic Development Corporation and George Krueger traveled to Japan recently. The purpose of the trip was to continue to strengthen the relationships that have resulted in Nippon Telephone and Telegraph placing a liaison office at UW-Platteville. Contacts were made with companies that are in the process of starting operations Grant County including one that has started a business in Platteville. In addition, several new relationships were formed with companies who are interested in doing business in southwestern Wisconsin.



Above left: Weather service is interested in collaborating with a local Platteville company on their technology. Above right: left to right, Ron Brisbois, George Krueger and Sonoko Maeda of Arkhe Industries at a temple in Kyoto.

Platteville Business Incubator Open House

Saturday, November 10 from noon to 5 there will be an open house. There are several new office suites and a new manufacturing company to tour. Food and refreshments will be served.

Alliant Energy Supports PAIDC



Cindy Lenz, Economic & Community Development Manager for Alliant Energy presents a tuition reimbursement check to George Krueger under Alliant's Partnership Program.

Platteville Literacy Council

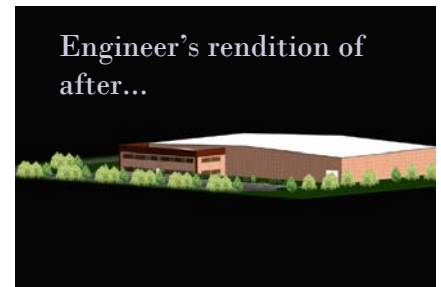
The Platteville-Area literacy Council, Inc. (PALC)* offers free and convenient tutoring to employees to help improve work place efficiency by improving necessary skills and talents as defined by the employer. Tutoring can occur at the workplace at convenient times as defined by the employer. Tutoring in English as a Second Language (ESL) is available along with providing orientation to the employee's new home community. Orientation includes helping families interface with schools, hospitals, medical and dental services, stores, restaurants, libraries, transportation (traffic signs), map reading, reading and comprehending manuals and contracts, using phones and making living arrangements.

*PALC Inc. is a non-profit organization comprised of volunteer retired teachers and other professionals. The group's focus is on providing educational help in our community, especially for teenagers and adults. For more information, contact PALC Director, Gloria Stephenson at 608 348 9162.

Platteville Area Industrial Development Corp.
52 Means Drive, Suite 104
Platteville, WI 53818 (608) 348-3050
Email: plattevilleindustry@centurytel.net
Website: www.plattevilleindustry.com

Shell Building For Sale or Lease

- 24,000 square feet expandable to 48,000 square feet or more
- 3.122 acre lot
- Constructed June, 2002
- 24' at eaves, 28'2" at center
- Priced below replacement value
- Over 7,000 commuters out of Grant County means lots of available labor!
- Brand new 4 lane Highway 151 connects Platteville with Madison in an hour and just minutes to Dubuque



Industrial land for sale—shovel ready lots from 1 to 30 acres. Utilities at curb with excellent telecommunication capabilities. Call (608)348-3050 for details.

New Engineering Building at UW-Platteville

The new engineering building on Longhorn Drive is progressing quite rapidly. This new building will house the microsystems and nanotechnology programs along with the other engineering programs.

